



**Australian
Bureau of
Statistics**

February 1997

EMBARGO: 11:30 AM (CANBERRA TIME) MON 24 FEB 1997

Business Indicators

Australian Capital Territory

NOTES

FORTHCOMING ISSUES

ISSUE RELEASE DATE

March 1997 24 March 1997
April 1997 21 April 1997

SYMBOLS AND OTHER USAGES

ACT Australian Capital Territory
n.a. not available
n.p. not available for publication
p preliminary
— nil or rounded to zero
* Represents data with a standard error of greater than 25%. Caution should be exercised when using this data.

INQUIRIES

For further information about statistics in this publication and the availability of related unpublished statistics, contact Kingsley Green on Canberra (06) 207 0286 or any ABS State office.

For information about other ABS statistics and services, please contact Information Services on Canberra (06) 252 6627, or 252 6007 or any ABS State office.

Dalma Jacobs
Regional Director
Australian Capital Territory

SUMMARY OF FINDINGS

UPDATED SERIES

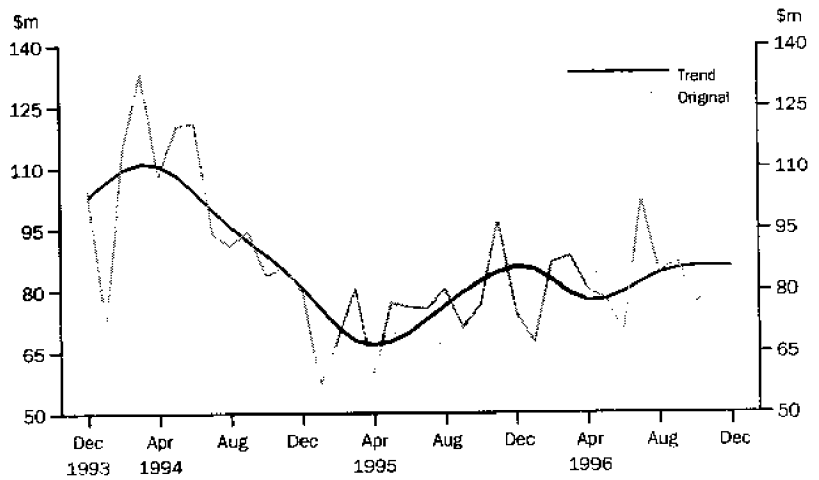
Series updated since the January 1997 issue are: labour force; industrial disputes; housing finance; building approvals; consumer price index; engineering construction; retail turnover; and new motor vehicle registrations. A feature article on the Transition from Education to Work in the ACT is included on page 6.

NOTABLE MOVEMENTS

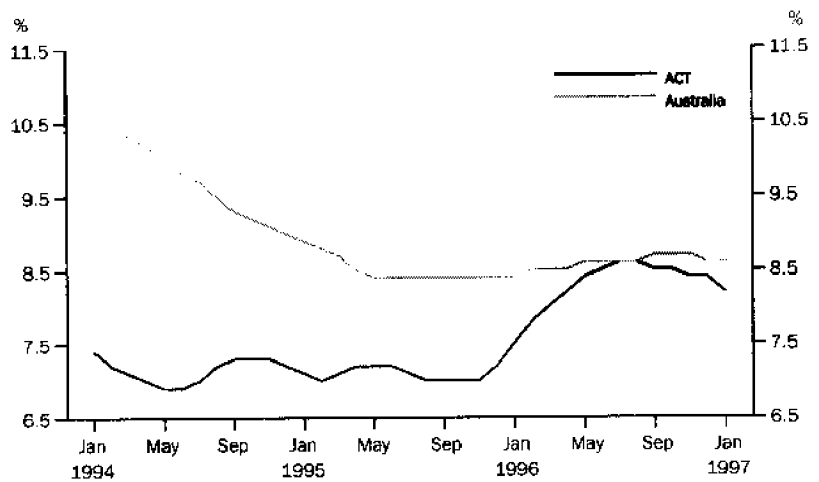
- Labour force** The trend number of persons employed in the ACT has fallen for each of the last 15 months from a peak of 159,700 persons in October 1995 to 152,200 persons in January 1997. Over the same period, the trend number of persons unemployed increased from 12,000 to 13,700 with the trend unemployment rate increasing from 7.0% to 8.2%. The trend unemployment rate declined from 8.4% in December 1996 to 8.2% in January 1997. The trend participation rate has decreased from 74.3% to 70.8% over the period October 1995 to January 1997.
- Industrial disputes** In October 1996, there were 141 working days lost per 1,000 employees in the ACT compared with 132 working days lost per 1,000 employees nationally. For the ACT, this was the second highest rate of working days lost per thousand employees since the 145 reported for the year ended June 1988.
- Housing and construction** The trend number of dwelling units approved in the ACT increased by 1.3% to 153 dwelling units in December 1996. This compares to 227 dwelling units approved in December 1995. Nationally the total number of dwelling units approved increased by 1.1% in December 1996.
- The trend number of dwelling units financed (includes refinancing) in the ACT during December 1996 dropped to 820 dwellings, a fall of 1.3%. The trend estimate for the value of commitments in the ACT in December 1996 was \$85.6 million, a decrease of 0.3% on the previous month.
- Engineering construction** The value of engineering construction activity done during the September quarter 1996 fell by 10% in the ACT and 9.8% for Australia from the previous quarter. This decline follows a significant rise in the value of engineering construction activity in the June quarter 1996 where an increase of 33% for the ACT and 21% for Australia was recorded.
- Prices** The ACT recorded no movement for the All Groups CPI between the quarters of September 1996 and December 1996, while annually there was an increase of 1.2%. Nationally the All Groups CPI increased by 0.2% over the December quarter 1996 and 1.5% over the year.
- Retail turnover** The trend estimate for retail turnover in the ACT for December 1996 was \$195.7 million, up slightly on the previous month's figure of \$195.4 million. ACT trend retail turnover increased by 0.2% since the previous month, while the national trend retail turnover decreased 0.3% on the previous month.
- Motor vehicle registrations** The trend estimate for new motor vehicle registrations for the ACT in December 1996 was 822. The series has declined for each of the months since January 1996 which recorded 1,055 new vehicles registered. Nationally, the trend for total new registrations in December 1996 recorded its seventh consecutive monthly fall, representing a 3.3% decline since May 1996.

SELECTED BUSINESS INDICATORS

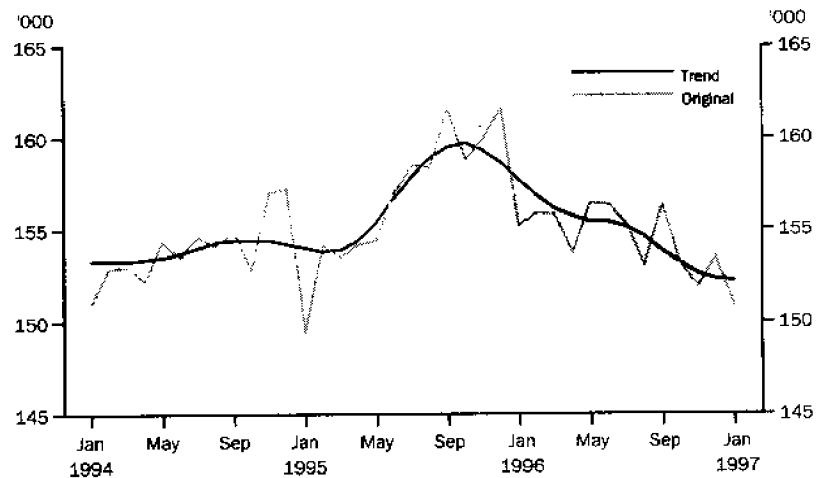
HOUSING FINANCE COMMITMENTS



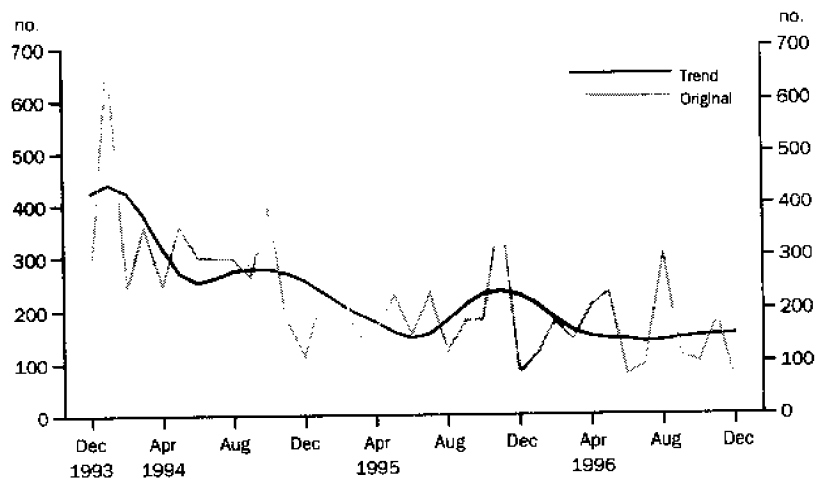
LABOUR FORCE — TREND UNEMPLOYMENT RATE



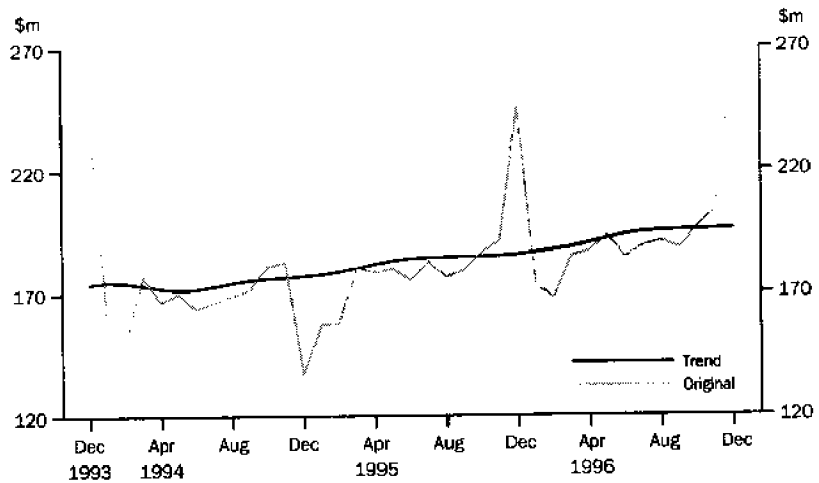
LABOUR FORCE — EMPLOYMENT



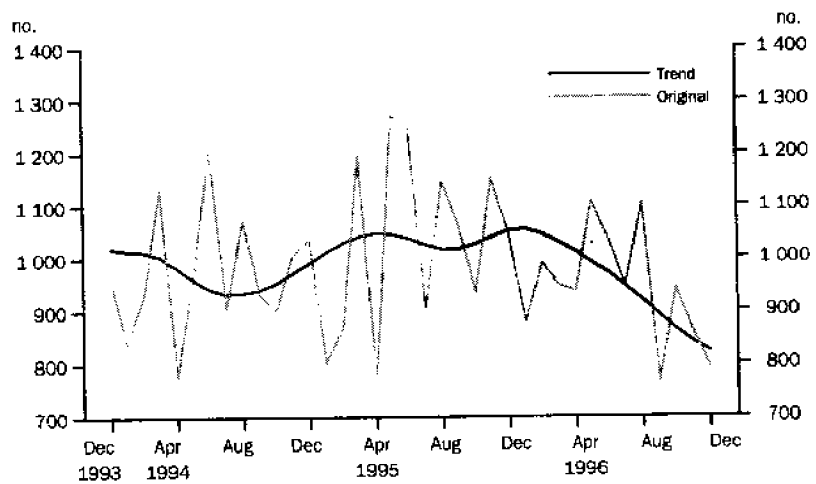
BUILDING APPROVALS —
DWELLING UNITS APPROVED



RETAIL TURNOVER



NEW MOTOR VEHICLE
REGISTRATIONS



TRANSITION FROM EDUCATION TO WORK OF WORKING AGE PERSONS IN THE ACT

The May 1996 Transition from Education to Work survey reported 45,383 persons aged 15-64 studying for a recognised educational qualification in the ACT, while a further 1,535 students were in courses less than the equivalent of one full-time semester's duration and 3,750 were studying but not for a qualification.

Total students in May 1996 numbered 50,668, amounting to almost 25% of the population aged 15-64, an increase of 5.8% (2,919) since May 1995. This is considerably higher than the national figures of 18% and 4% respectively.

Students in recognised educational courses were almost equally divided between males and females, in both schools and tertiary institutions. There were 12% more females (2,098) than males (1,652) in non-recognised educational courses.

Higher education was reported as the type of educational institution attended for 44% (22,331) of total students, while 28% (14,209) were at a school, 19% (9,455) were at Technical and Further Education (TAFE) and 9% (4,675*) were at other educational institutions.

Just over 59% of total students indicated they were in full-time or part-time employment in May 1996. A further 32% were not in the labour force and the remaining 9% were unemployed.

Over 15,000 persons aged 25-64 were studying for a recognised post school qualification, of whom 64% (9,717) were enrolled at a higher education institution.

In May 1996, 53,059 persons stated that they had attended an educational institution during 1995, of whom 66% were full-time.

In the 1996 survey, 3,874 persons in the ACT indicated that they had gained placement in an educational institution in 1996 but had deferred their study to a later date, while 1,126* had been unable to gain a place.

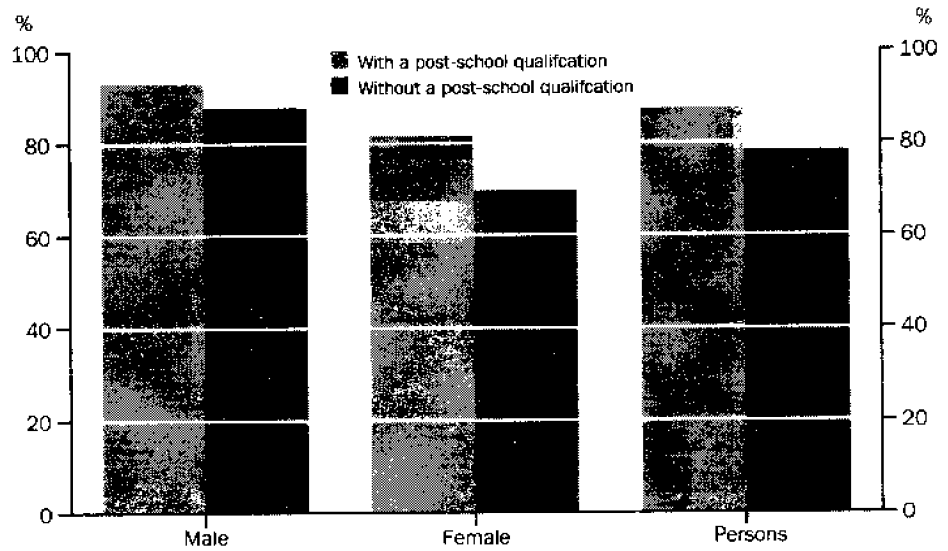
The survey showed that 20,060 persons were studying in 1995 but had ceased study before May 1996. Of these persons 57% (11,405*) had been attending recognised educational courses, 10% (1,998) had been in secondary school courses, 10% (1,945) were in courses lasting less than the equivalent of one full-time semester and 24% (4,712) had been in study that would not result in a qualification. At the time of the survey 40% (7,998) of the 20,060 persons who were studying in 1995 but had ceased study in 1996, reported having obtained either full or part-time employment.

In May 1996, 110,185 persons, or 53% of the ACT population aged 15-64, had recognised post-school qualifications. This is over 10% higher than the national figure of 42%. Of these 83% (91,714) were employed, 4% (4,546) were unemployed with the remaining 13% (13,926) not in the labour force.

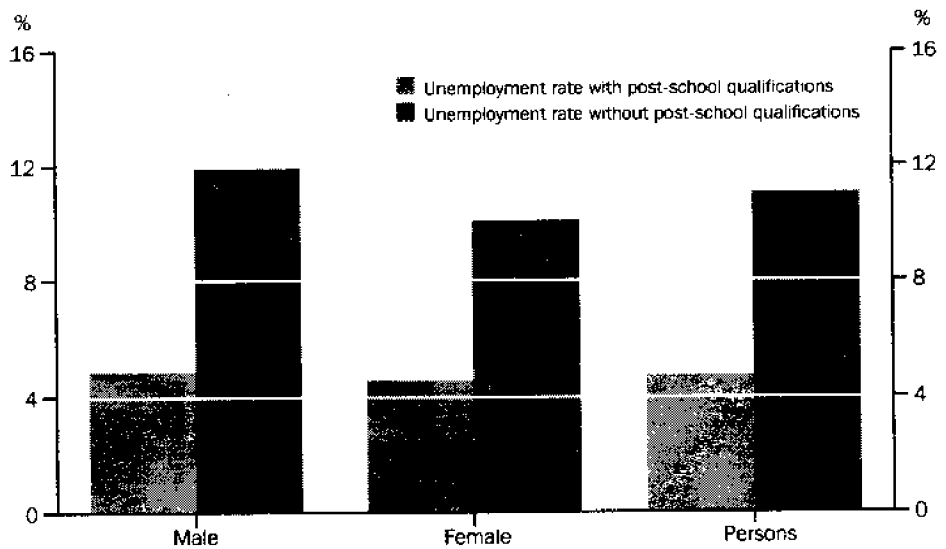
Labour force participation rates for persons with recognised post-school qualifications remain higher (87%) than for those without qualifications (78%). Both are above the national rates. Unemployment rates for persons with qualifications (4.7%) are less than half that for those without qualifications (11%).

The number of apprentices reported in May 1996 was 912*, a decrease of 49% (888) since May 1995. Of the total apprentices in May 1996 65% (595*) were employed in the private sector with the remaining 35% (317*) employed in the public sector.

PARTICIPATION RATES OF PERSONS WITH AND WITHOUT POST-SCHOOL QUALIFICATIONS



UNEMPLOYMENT RATES OF PERSONS WITH AND WITHOUT POST-SCHOOL QUALIFICATIONS



1**AUSTRALIAN BUSINESS EXPECTATIONS: SALES, MARCH QUARTER
1997/DECEMBER QUARTER 1997, EXPECTED AGGREGATE CHANGE**

<i>Period</i>	<i>Australian Capital Territory</i>	<i>Australia</i>
	<i>%</i>	<i>%</i>
Short-term		
Dec qtr 1995-Mar qtr 1996	0.5	-0.2
Mar qtr 1996-Jun qtr 1996	1.8	2.3
Jun qtr 1996-Sep qtr 1996	0.4	1.6
Sep qtr 1996-Dec qtr 1996	-0.3	1.6
Dec qtr 1996-Mar qtr 1997	-1.1	0.4
Medium-term		
Dec qtr 1995-Dec qtr 1996	3.8	4.4
Mar qtr 1996-Mar qtr 1997	2.3	4.1
Jun qtr 1996-Jun qtr 1997	1.4	3.6
Sep qtr 1996-Sep qtr 1997	1.5	3.1
Dec qtr 1996-Dec qtr 1997	2.2	3.1

Indicator	Unit	Australian Capital Territory			Australia		
		Latest figure	Change from		Latest figure	Change from	
			Previous period	Same period previous year		Previous period	Same period previous year
POPULATION, VITAL AND LABOUR							
POPULATION, Jun qtr 96	'000	307.5	0.4	1.1	18 289.1	0.3	1.3
Natural increase	no.	858	15.9	5.9	31 176	-10.2	-3.2
Net migration	no.	205	-75.1	-144.1	19 330	-45.3	-18.8
Total increase	no.	1 063	-31.9	208.1	50 506	-27.9	-9.8
LABOUR FORCE, Jan 97							
<i>Original series</i>							
Employed	'000	150.9	-1.7	-2.8	8 296.3	-2.4	1.4
Unemployed	'000	15.2	7.8	4.1	853.8	6.0	2.7
Unemployment rate(a)	%	9.2	0.8	0.6	9.3	0.6	0.1
Participation rate(a)	%	70.9	-0.7	-2.5	63.2	-1.1	-0.1
Long-term unemployed, Dec 96	no.	2 727	-17.1	10.4	225 645	2.6	2.3
Long-term unemployed as percentage total unemployed, Dec 96(a)	—	19.4	-6.5	-0.2	28.0	-1.8	-1.5
<i>Trend series</i>							
Employed	'000	152.2	-0.1	-3.5	8 419.0	0.1	1.2
Unemployed	'000	13.7	-1.4	7.0	791.5	-0.3	3.1
Unemployment rate(a)	%	8.2	-0.2	0.7	8.6	—	0.2
Participation rate(a)	%	70.8	-0.2	-2.8	63.6	—	-0.2
JOB VACANCIES, Nov 96	'000	1.4	55.6	—	62.3	-1.9	11.1
INDUSTRIAL DISPUTES IN PROGRESS, Oct 96							
Working days lost	'000	0.0	-100.0	-100.0	40.3	18.5	-49.4
Days lost per '000 employees (year ended Oct 96)	no.	141.0	-0.7	1 466.7	132.0	-4.3	45.1
BUILDING AND CONSTRUCTION							
HOUSING FINANCE, Dec 96							
Secured commitments to individuals for							
<i>Original series</i>							
Construction of dwellings	\$m	6.9	3.0	23.2	484.6	-5.5	15.6
Purchase of new dwellings	\$m	6.6	8.2	-25.8	190.1	-16.0	23.6
Purchase of established dwellings	\$m	51.2	-1.9	11.1	3 228.6	-0.4	23.4
Total housing commitments	\$m	84.0	4.6	13.1	3 903.3	-1.9	22.4
<i>Seasonally adjusted series</i>							
Total housing commitments	\$m	90.5	7.4	9.2	4 219.1	6.6	20.3
<i>Trend series</i>							
Dwelling units financed	no.	820	-1.3	-4.3	40 190	-0.1	4.3
Total housing commitments	\$m	85.6	-0.3	-0.2	4 136.5	0.7	11.3
BUILDING APPROVALS, Dec 96							
<i>Original series</i>							
Dwelling units	no.	61	-66.8	-23.8	9 797	-12.6	10.9
Value of new residential	\$m	6.9	-65.7	-26.6	961.4	-14.8	13.0
Value of residential alterations and additions	\$m	1.6	-36.0	-33.3	171.2	-27.5	9.1
Value of non-residential	\$m	15.8	-33.3	-17.7	966.9	-42.3	53.0
Value of total building	\$m	24.3	-47.5	683.9	2 099.6	-30.9	28.0
<i>Trend series</i>							
Dwelling units	no.	153	1.3	-32.6	10 931	1.1	7.6
BUILDING COMMENCEMENTS, Sep qtr 96							
New houses	no.	210	-38.6	-39.3	20 461	-1.7	-14.1
Value of houses commenced	\$m	25.6	-28.7	-31.0	2 202.3	-0.2	-9.4
Value of non-residential building commenced	\$m	108.8	-26.4	76.3	2 936.6	0.3	19.3
Value of total commencements	\$m	156.2	-26.7	12.9	6 556.6	-2.0	1.1
PRICE INDEXES							
Established house price index, Sep qtr 96 (1989-90=100.0)		127.2	-0.2	-0.6	114.0	0.4	1.2

For footnotes see end of table.

Indicator	Unit	Australian Capital Territory			Australia		
		Latest figure	Change from		Latest figure	Change from	
			Previous period	Same period previous year		Previous period	Same period previous year
PRICES, WAGES AND CONSUMER SPENDING							
CPI, Dec qtr 96 1989-90=100.0							
Food	(1989-90=100.0)	122.0	1.4	2.7	119.4	0.9	3.2
Housing	(1989-90=100.0)	107.9	-3.7	-3.5	103.2	-2.7	-2.7
Transportation	(1989-90=100.0)	130.2	1.0	2.4	124.5	0.9	1.8
All groups	(1989-90=100.0)	121.4	—	1.2	120.3	0.2	1.5
AVERAGE WEEKLY EARNINGS, Aug 96							
Original series							
Males	\$	762.0	2.6	4.0	673.5	0.3	2.9
Females	\$	545.6	0.8	6.7	445.1	0.9	3.6
Persons	\$	647.7	1.0	3.9	566.6	0.4	3.4
Trend series							
Males	\$	756.2	0.5	2.7	676.2	0.7	2.8
Females	\$	550.5	2.6	6.5	446.4	1.2	3.6
Persons	\$	648.3	1.0	3.5	569.2	0.9	3.3
RETAIL TURNOVER, Dec 96							
Original series							
Food retailing	\$m	87.4	7.8	2.8	4 695.1	9.8	1.2
Department stores	\$m	45.3	79.8	-3.0	1 837.9	69.9	-1.1
Hospitality and services	\$m	32.5	3.5	6.2	1 966.0	12.8	-6.8
All other retailing	\$m	94.4	43.0	13.5	4 700.3	34.1	1.9
Total	\$m	259.6	27.4	5.7	13 199.3	24.4	-0.1
Trend series							
Food retailing	\$m	78.2	-0.8	4.3	4 189.3	-0.1	3.7
Department stores	\$m	23.8	—	-0.4	968.1	0.2	0.1
Hospitality and services	\$m	29.9	-0.3	5.3	1 655.1	-1.0	-6.2
All other retailing	\$m	63.8	1.6	10.0	3 331.0	-0.3	1.4
Total	\$m	195.7	0.2	5.6	10 143.5	-0.3	0.9
TOURISM AND TRANSPORT							
HOTELS, MOTELS AND GUEST HOUSE ACCOMMODATION, Jun qtr 96							
Original series							
Room nights	'000	215.9	8.9	3.2	8 788.8	-3.9	3.0
Takings at current prices	\$m	20.3	12.8	5.7	835.8	-4.3	10.5
Takings at 1989-90 prices	\$m	16.7	12.1	1.8	697.0	-5.0	7.1
Room occupancy rate(a)	%	57.5	-6.0	-5.2	56.1	-2.9	—
Seasonally adjusted series							
Room nights	'000	223.7	10.7	2.8	9 178.8	-0.2	3.0
Takings at current prices	\$m	20.7	15.0	5.1	888.4	1.8	10.6
Takings at 1989-90 prices	\$m	17.1	14.8	2.4	740.9	1.1	7.1
Trend series							
Room nights	'000	214.7	2.8	-0.5	9 203.1	0.5	2.9
Takings at current prices	\$m	19.6	3.7	1.6	888.4	2.3	10.3
Takings at 1989-90 prices	\$m	16.1	3.2	-1.8	739.9	1.6	6.7
NEW MOTOR VEHICLE REGISTRATIONS, Dec 96							
Motor vehicles	no.	791	-8.2	-24.2	54 586	1.8	7.7
Seasonally adjusted motor vehicles	no.	790	-7.1	-26.5	54 038	-0.1	3.8
Trend motor vehicles	no.	822	-2.3	-21.9	53 072	-0.4	1.9

For footnotes see end of table.

Indicator	Unit	Australian Capital Territory			Australia		
		Latest figure	Previous period	Change from	Latest figure	Previous period	Change from
				Same period previous year			Same period previous year
AGGREGATE INDICATORS							
STATE ACCOUNTS, Sep qtr 96(b)							
Original series							
Gross State product at av. 1989-90 prices	\$m	2 076	-6.1	1.3	108 823	1.5	4.1
Gross State product at current prices	\$m	2 528	-5.1	5.7	123 107	0.6	5.5
State final demand at av. 1989-90 prices	\$m	2 806	-9.3	-4.5	107 822	-1.8	3.2
Private final consumption expenditure	\$m	1 449	2.0	3.1	77 875	1.9	4.6
Private gross fixed capital expenditure	\$m	175	-11.6	-3.3	20 307	-1.1	6.5
Trend series							
Gross State product at av. 1989-90 prices	\$m	2 142	-0.9	2.0	110 058	0.5	3.8
Gross State product at current prices	\$m	2 611	0.4	6.0	125 420	1.1	5.9
State final demand at av. 1989-90 prices	\$m	2 884	-2.6	-3.4	108 871	0.5	3.5
Private final consumption expenditure	\$m	1 435	0.7	3.5	78 064	0.9	5.2
Private gross fixed capital expenditure	\$m	185	-4.6	-1.1	20 437	2.4	7.6

(a) Change shown in terms of percentage points.

(b) State estimates are not comparable to national estimates for June quarter 1995 due to revised aggregates in *Australian National Accounts, State Accounts* (5242.0).

Source: ABS Catalogue nos: 3101.0, 5242.0, 5609.0, 6202.0, 6203.0, 6302.0, 6321.0, 6354.0, 6401.0, 6408.0, 6416.0, 8501.0, 8634.0, 8635.8, 8731.0, 8752.0, 9214.0, 9301.0.

3 AUSTRALIAN CAPITAL TERRITORY IN RELATION TO THE REST OF AUSTRALIA

Indicator	Unit	Latest period	NSW	Vic.	Qld	SA	WA	Tas.	NT	ACT	Aust.
POPULATION	'000	Jun qtr 96p	6 190.2	4 541.0	3 354.7	1 479.2	1 762.7	473.4	177.7	307.5	18 289.1
LABOUR FORCE											
Employed persons (trend)	'000	Jan 97	2 828.9	2 107.9	1 542.8	657.8	850.5	196.8	81.6	152.2	8 419.0
Unemployment rate (trend)	%	Jan 97	7.7	9.1	9.8	9.4	7.7	10.4	5.2	8.2	8.6
STATE ACCOUNTS(a)											
Gross State product at 1989-90 prices (trend)	\$m	Sep qtr 96	37 493	28 737	18 211	7 550	12 278	2 181	1 242	2 142	110 058
Gross State product at current prices (trend)	\$m	Sep qtr 96	43 774	32 691	20 273	8 816	13 125	2 623	1 357	2 611	125 420
BUILDING APPROVALS											
Dwelling units approved	no.	Dec 96	3 517	2 005	2 312	410	1 219	153	123	61	9 797
Dwelling units approved (trend)	no.	Dec 96	3 747	1 990	2 768	501	1 316	160	170	153	10 931
Value of non-residential building approved	\$m	Dec 96	509.2	221.6	128.6	28.0	46.4	4.4	13.2	15.8	966.9
Value of all buildings approved	\$m	Dec 96	949.8	461.0	363.9	72.5	179.3	19.7	29.7	24.3	2 099.6
ENGINEERING CONSTRUCTION											
Value of engineering construction work done	\$m	Sep qtr 96	1 303.7	519.8	877.4	139.1	735.0	49.4	59.0	35.9	3 719.3
AVERAGE WEEKLY EARNINGS											
Full-time adult ordinary time (trend)	\$	Aug 96	713.4	664.8	629.1	636.0	691.7	635.3	678.2	780.7	677.9
RETAIL TRADE											
Retail turnover (trend)	\$m	Dec 96	3 643.0	2 372.5	1 819.4	750.3	1 005.1	247.3	110.2	195.7	10 143.5
HOTELS, MOTELS & GUEST HOUSE ACCOMMODATION											
Room nights occupied (trend)	'000	Jun qtr 96	3,148.7	1 509.1	2 421.4	527.9	828.9	260.3	292.1	214.7	9 203.1
NEW MOTOR VEHICLE REGISTRATIONS											
Trend	no.	Dec 96	17 918	13 478	9 965	3 392	5 686	1 237	575	822	53 072

CONSUMER PRICE INDEX

Food	Unit	Latest period	Syd.	Melb.	Bris.	Adel.	Perth	Hob.	Dar.	Camb.	Aust.
Housing	(1989-90=100.0)	Dec qtr 96	120.0	118.4	118.0	120.7	120.8	120.6	118.8	122.0	119.4
Transportation	(1989-90=100.0)	Dec qtr 96	107.7	96.7	109.6	100.5	98.1	104.8	120.6	107.9	103.2
All Groups	(1989-90=100.0)	Dec qtr 96	125.4	124.1	123.3	125.5	122.6	121.8	122.3	130.2	124.5
Average retail prices (cents)	(1989-90=100.0)	Dec qtr 96	120.4	119.9	120.8	122.6	118.4	121.3	121.7	121.4	120.3
Milk, carton, supermarket sales	1 litre	Sep qtr 96	114	125	114	114	124	120	116	109	n.a.
Bread, white loaf, sliced, supermarket sales	680 g	Sep qtr 96	195	192	193	154	184	167	194	182	n.a.
Beef, rump steak	1 kg	Sep qtr 96	1221	1107	1056	1123	1082	1074	1289	1048	n.a.
Chicken, frozen	1 kg	Sep qtr 96	307	352	342	369	346	397	383	322	n.a.
Potatoes	1 kg	Sep qtr 96	86	94	90	67	120	78	109	83	n.a.
Coffee, instant (jar)	150 g	Sep qtr 96	572	568	572	509	574	617	565	566	n.a.
Scotch nip, public bar	30 ml	Sep qtr 96	317	283	251	329	324	241	310	282	n.a.
Private motoring petrol, leaded	1 litre	Sep qtr 96	72.8	73.6	66.4	73.6	74.6	76.2	79.4	76.2	n.a.
Private motoring petrol, unleaded	1 litre	Sep qtr 96	70.7	71.5	62.2	71.3	72.5	74.1	77.4	74	n.a.

(a) State estimates are not comparable to national estimates for June quarter 1995 due to revised aggregates in Australian National Accounts, State Accounts (5242.0).

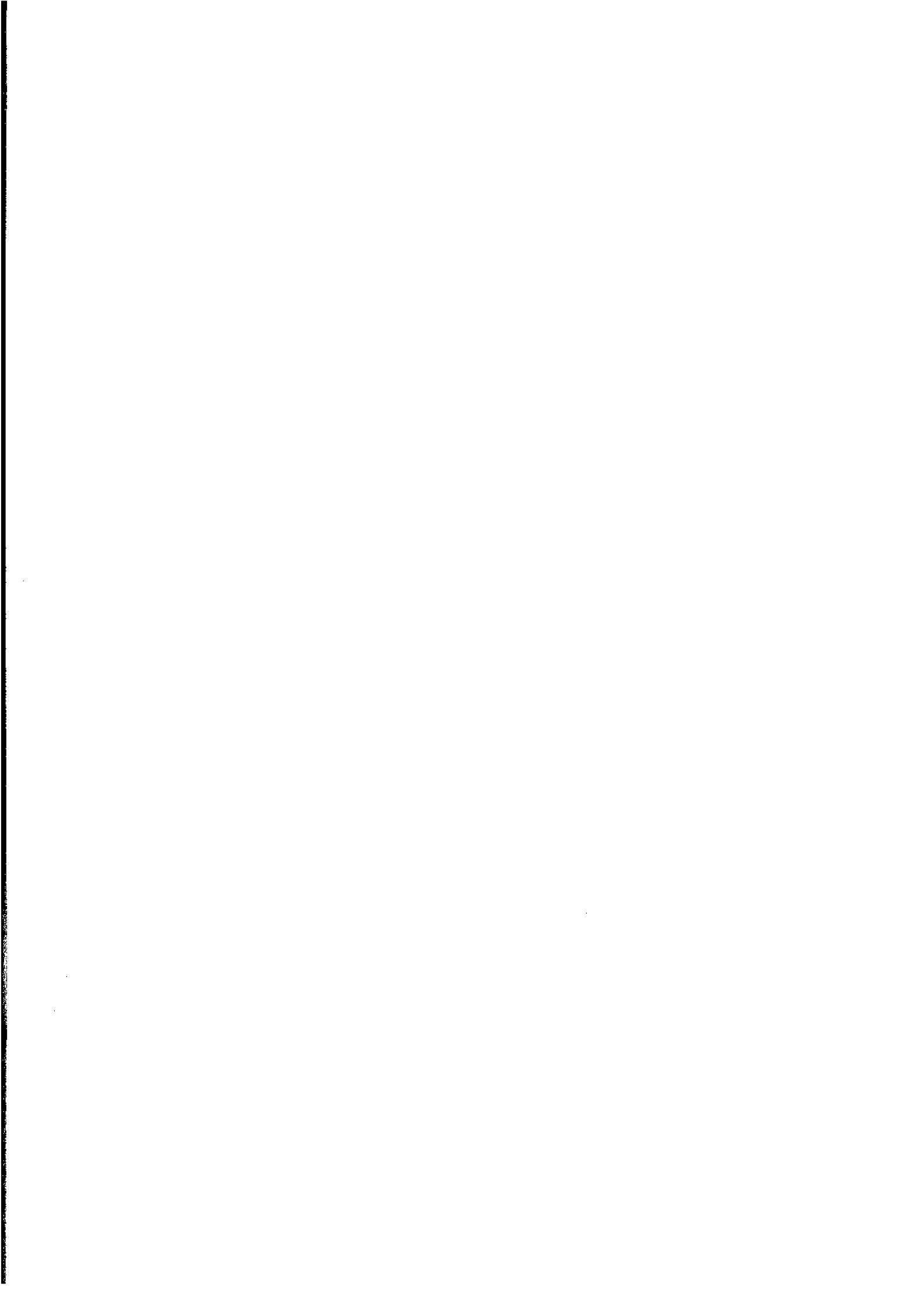
4

AUSTRALIAN CAPITAL TERRITORY IN RELATION TO THE REST OF AUSTRALIA — PERCENTAGE CHANGES

Indicator	Latest period	NSW	Vic.	Qld	SA	WA	Tas.	NT	ACT	Aust.
POPULATION	Jun qtr 96p	0.3	0.2	0.5	0.1	0.4	—	0.1	0.4	0.3
LABOUR FORCE										
Employed persons (trend)	Jan 97	0.3	0.3	—	—	0.1	-0.3	-0.9	-0.1	0.1
Unemployment rate (trend)	Jan 97	—	-0.1	—	-0.1	0.1	-0.1	0.1	-0.2	—
STATE ACCOUNTS(a)										
Gross State product at 1989-90 prices (trend)	Sep qtr 96	0.9	0.2	1.3	—	0.3	-0.5	0.4	-0.9	0.5
Gross State product at current prices (trend)	Sep qtr 96	1.6	1.0	1.3	-0.3	—	0.9	0.8	0.4	1.1
BUILDING APPROVALS										
Dwelling units approved	Dec 96	-13.8	7.0	-19.0	-16.0	-8.2	-8.9	-46.1	-66.8	-12.6
Dwelling units approved (trend)	Dec 96	1.8	-0.6	-0.2	-1.0	1.5	-1.2	0.6	1.3	1.1
Value of non-residential building approved	Dec 96	-42.2	-22.0	-51.7	-29.5	-71.9	-39.7	57.1	-33.3	-42.3
Value of all buildings approved	Dec 96	-33.6	-13.2	-37.3	-18.1	-41.1	-17.9	-12.4	-47.5	-30.9
ENGINEERING CONSTRUCTION										
Value of engineering construction work done	Sep qtr 96	-9.2	-20.5	9.5	-38.5	-13.3	-28.7	23.2	-10.0	-9.8
AVERAGE WEEKLY EARNINGS										
Full-time adult ordinary time (trend)	Aug 96	1.4	0.3	1.1	0.7	0.7	0.9	1.1	0.7	1.0
RETAIL TRADE										
Retail turnover (trend)	Dec 96	-0.5	0.5	-1.0	-0.5	-0.3	0.6	-1.3	0.2	-0.3
HOTELS, MOTELS & GUEST HOUSE ACCOMMODATION										
Room nights occupied (trend)	Jun qtr 96	—	0.8	0.6	1.4	1.2	-2.6	-0.5	2.8	0.5
NEW MOTOR VEHICLE REGISTRATIONS										
Trend	Dec 96	-1.2	1.0	-1.4	0.6	-0.2	0.1	0.3	-2.3	-0.4
	Latest period	Syd.	Melb.	Bris.	Adel.	Perth	Hob.	Dar.	Canb.	Aust.
CONSUMER PRICE INDEX										
Food	Dec qtr 96	1.5	0.8	0.3	1.3	0.4	0.5	-0.3	1.4	0.9
Housing	Dec qtr 96	-2.4	-2.9	-2.5	-2.9	-2.9	-2.4	-0.9	-3.7	-2.7
Transportation	Dec qtr 96	1.1	0.8	0.9	0.9	0.5	1.8	0.3	1.0	0.9
All Groups	Dec qtr 96	0.2	0.3	0.2	0.3	0.1	0.2	0.1	0.0	0.2
Average retail prices (cents)										
Milk, carton, supermarket sales	Sep qtr 96	0.9	3.3	—	0.9	3.3	—	0.9	2.8	n.a.
Bread, white loaf, sliced, supermarket sales	Sep qtr 96	0.5	10.3	1.6	9.2	2.2	9.9	2.1	-1.6	n.a.
Beef, rump steak	Sep qtr 96	-4.8	-0.8	-3.0	-3.9	-0.6	-8.8	1.4	-4.5	n.a.
Chicken, frozen	Sep qtr 96	-7.0	1.1	10.0	6.0	4.5	6.7	0.3	6.6	n.a.
Potatoes	Sep qtr 96	3.6	-5.1	4.7	-4.3	6.2	1.3	-3.5	6.4	n.a.
Coffee, instant (jar)	Sep qtr 96	0.5	-0.2	-3.7	-3.6	0.5	-2.5	-5.5	-0.9	n.a.
Scotch nip, public bar	Sep qtr 96	0.3	3.3	—	2.5	—	3.0	1.0	1.4	n.a.
Private motoring petrol, leaded	Sep qtr 96	-2.9	-0.7	0.2	-3.0	-2.4	-1.6	—	-3.2	n.a.
Private motoring petrol, unleaded	Sep qtr 96	-3.2	-0.6	-3.0	-3.1	-2.4	-1.7	—	-3.3	n.a.

(a) Change shown in terms of percentage points.

(b) State estimates are not comparable to national estimates for June quarter 1995 due to revised aggregates in *Australian National Accounts, State Accounts* (5242.0).



For more information . . .

The ABS publishes a wide range of statistics and other information on Australia's economic and social conditions. Details of what is available in various publications and other products can be found in the ABS Catalogue of Publications and Products available from all ABS Offices.

ABS Products and Services

Many standard products are available from ABS bookshops located in each State and Territory. In addition to these products, information tailored to the needs of clients can be obtained on a wide range of media by contacting your nearest ABS Office. The ABS also provides a Subscription Service for standard products and some tailored information services.

National Dial-a-Statistic Line

0055 86 400

Steadycom P/L: premium rate 25c/20 secs.

This number gives 24-hour access, 365 days a year, for a range of important economic statistics including the CPI.

Internet

<http://www.abs.gov.au>

A wide range of ABS information is available via the Internet, with basic statistics available for each State, Territory and Australia. We also have Key National Indicators, ABS product release details and other information of general interest.

Sales and Inquiries

Keylink STAT.INFO/ABS
X.400 (C:Australia,PUB:Telememo,O:ABS,FN:STAT,SN:INFO)
Internet stat.info@abs.telememo.au

National Mail Order Service (06) 252 5249
Subscription Service 1800 02 0608

	Information Inquiries	Bookshop Sales
SYDNEY	(02) 9268 4611	(02) 9268 4620
MELBOURNE	(03) 9615 7755	(03) 9615 7755
BRISBANE	(07) 3222 6351	(07) 3222 6350
PERTH	(09) 360 5140	(09) 360 5307
ADELAIDE	(08) 8237 7100	(08) 8237 7582
CANBERRA	(06) 252 6627	(06) 207 0326
HOBART	(03) 6222 5800	(03) 6222 5800
DARWIN	(08) 8943 2111	(08) 8943 2111



Client Services, ABS, PO Box 10, Belconnen ACT 2616

